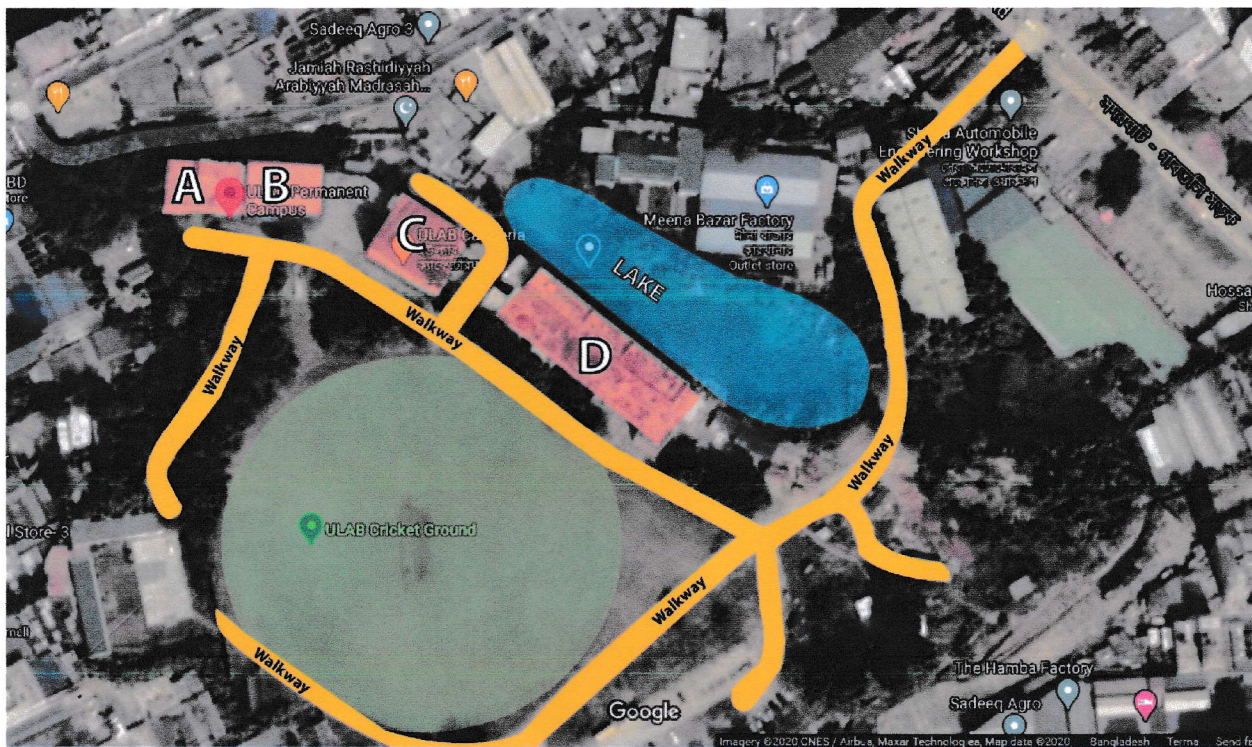


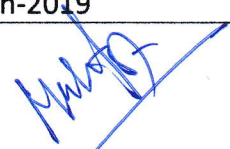
Pedestrian Priority on Campus:

Walking has always been the primary means of human locomotion. In the University of Liberal Arts Bangladesh (ULAB), the term usually refers to someone walking on a walkways or pavements in order to improve the environment and the safety. The use of cars for short journeys is officially discouraged in many parts of the campus.

Considering this concept The Management of ULAB, established indoor pedestrian networks connect the different rooms or spaces throughout the campuses.

Indoor pedestrian networks are show as below map:



Created Date	12-Jan-2019	Revision Date	03-Jan-2020
Prepared by		Approved by	